

Proposed stud partition to consist of 75x50mm studs faced on both sides using 12.5mm p/b & skim D.P.C under. 75mm Rockwool with a density of 10kg/m<sup>3</sup> incorporated between studs.

Take out existing window, part build up opening, retain existing lintel & fit new window & make good as reqd.

Take out existing door, build up opening & make good as reqd.  
Proposed smoke detector

Proposed log burner on slate hearth projecting 300mm beyond burner to front. connection between boiler & clay flue liner in cast iron or other approved details of kind provided for Building Inspector approval prior to ordering.  
\* Extractor fans provided to utility capable of extracting 30l/s & to kitchen capable of extracting 60l/s (unless cooker hood where 30l/s acceptable). Extractors ducted to exterior all in strict acc' with Man' printed instructions

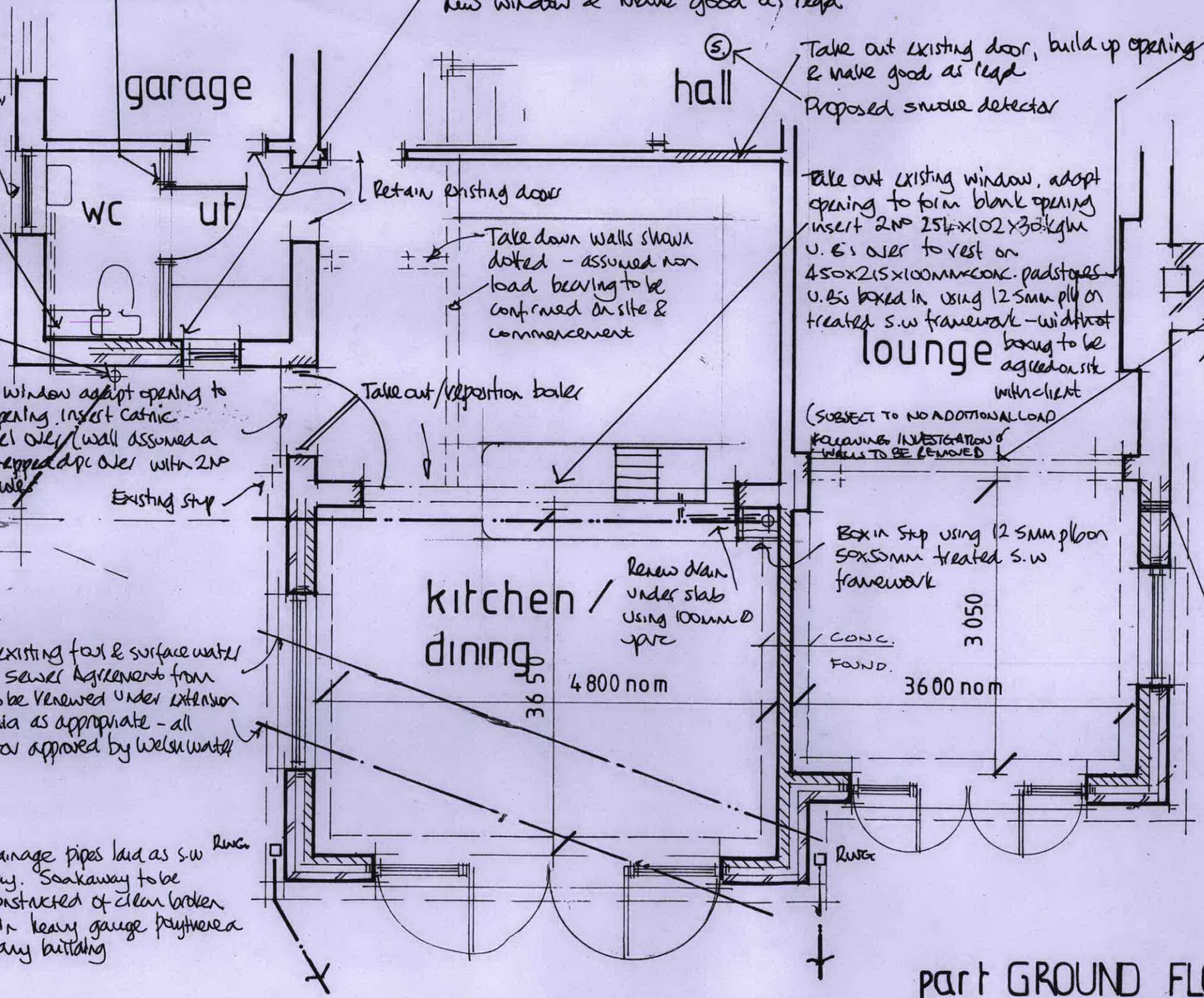
Take out existing door part build up opening in cavity work, fit new window & make good.  
Retain existing boiler & balanced flue by Corgi registered installer

Proposed 100mm dia stub stack

Take out existing window adapt opening to form new door opening. Insert catnic CG 50/100 lintel over (wall assumed a 250mm cavity) stepped dpc over with 2nd proprietary weep holes.  
Existing manholes

Assumed line of existing foul & surface water drains subject to sewer Agreement from Welsh water - to be renewed under extension using 100/150mm dia as appropriate - all work by contractor approved by Welsh water

100mm Ø upvc drainage pipes laid as s.w drains to soakaway. Soakaway to be 1.5x1.5x1.5m constructed of clean broken stone & covered in heavy gauge polythene a min of 5m from any building



Take out existing patio doors, adapt opening & insert 2nd 203x102x30kg/m U.B's over to rest on conc padstones U.B's boxed in using 12.5mm p/b & skim on beavers shot fired to beam.  
New chimney off conc foundation

Expand wall starters at junction of new walls with existing fitted in strict accordance with man' printed instructions

Flue lined using 225mm sq. flue liners with sockets uppermost to BS1181

\* Catnic CG 50/100 lintels to new openings in cavity walls unless otherwise noted stepped dpc over with proprietary weep holes at 750mm c/c  
Permanent vent for combustion air having unobstructed air flow area of 12000mm<sup>2</sup>

RECEIVED  
16 MAY 2014  
CALEDFRYN RECEPTION

part GROUND FLOOR PLAN as proposed 1:50