

Existing roof timbers.

- P1. 175x75 timber Purlin fitted vertical.
- P2. 225x75 timber Purlin fitted vertical.
- P3. 225x75 timber Purlin fitted at 90° to roof Slope.

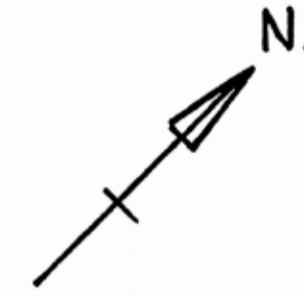
Ceiling Joists and rafters 15x50@400 c/c.

DYFFRYN GWY TREFNANT

DG2 - 1:50 ROOF VOID

EXISTING

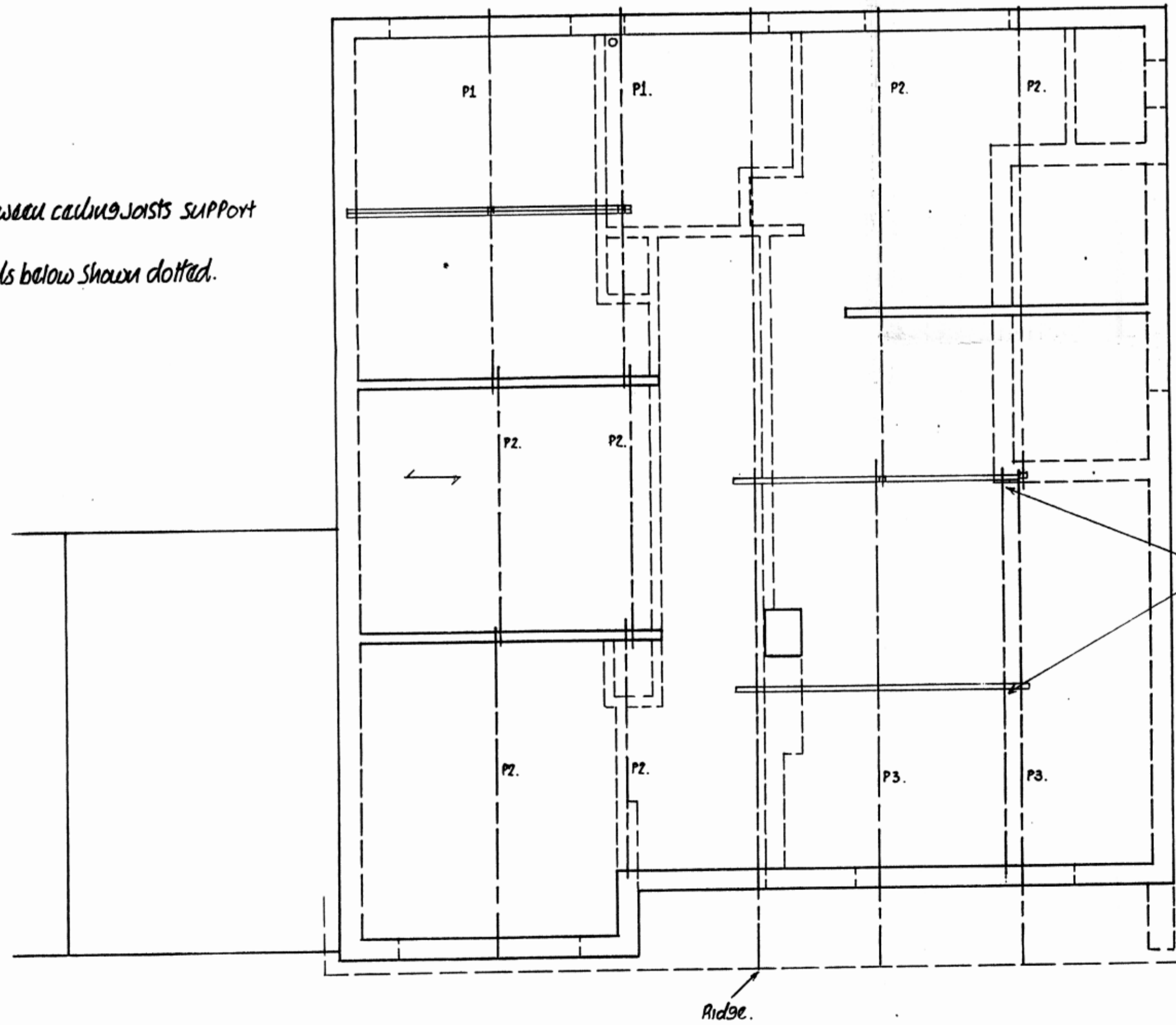
30 / 2012 / 0984 / P F



RECEIVED
26-JUL-2012
CALEDFRYN RECEPTION

2^{no} 200x75 timbers between ceiling joists support Purlin Props.

masonry internal walls below shown dotted.



178x102 steel over top of ceiling joists at 90° supports 225x75mm timber and Purlin props etc.