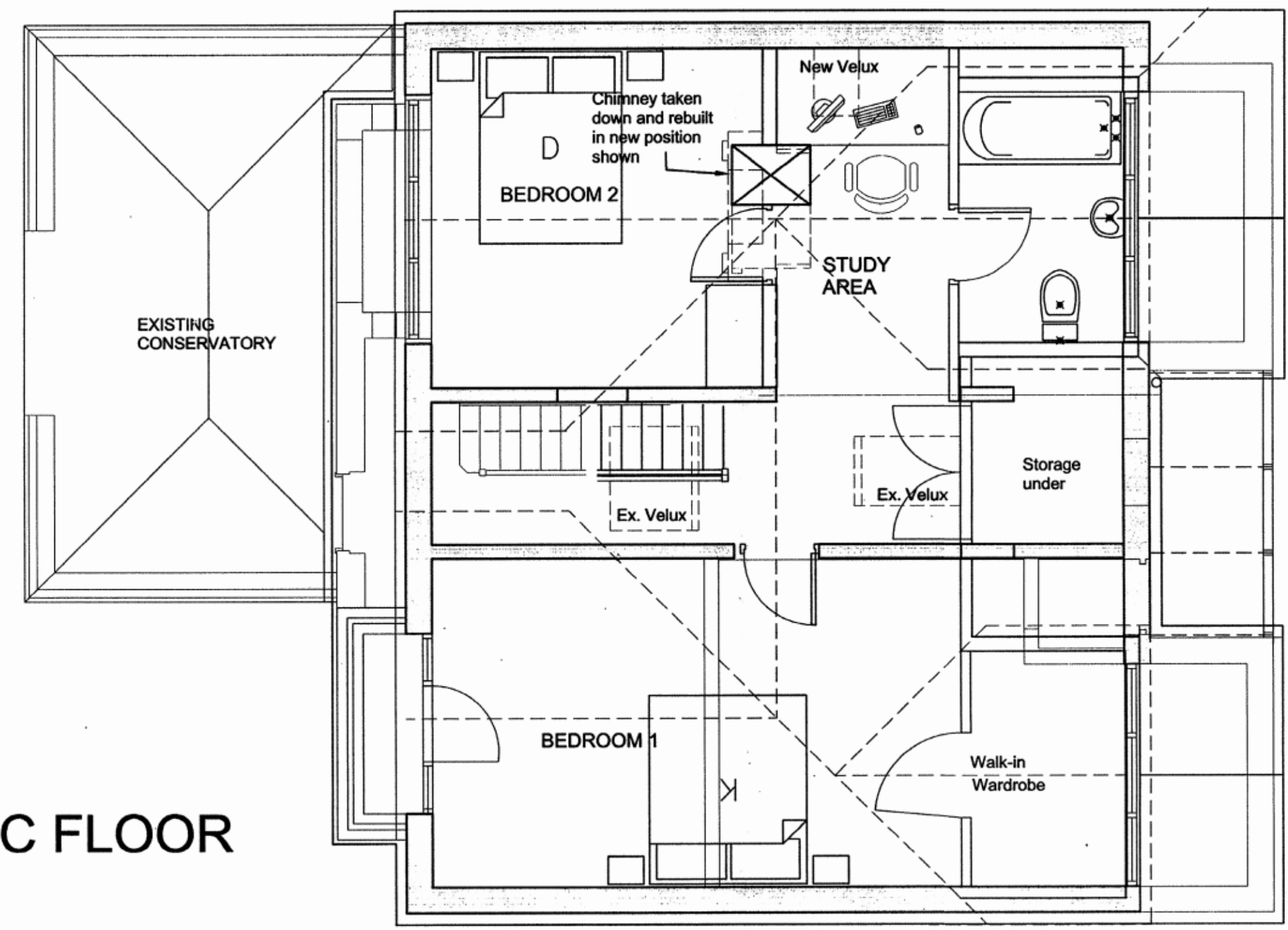
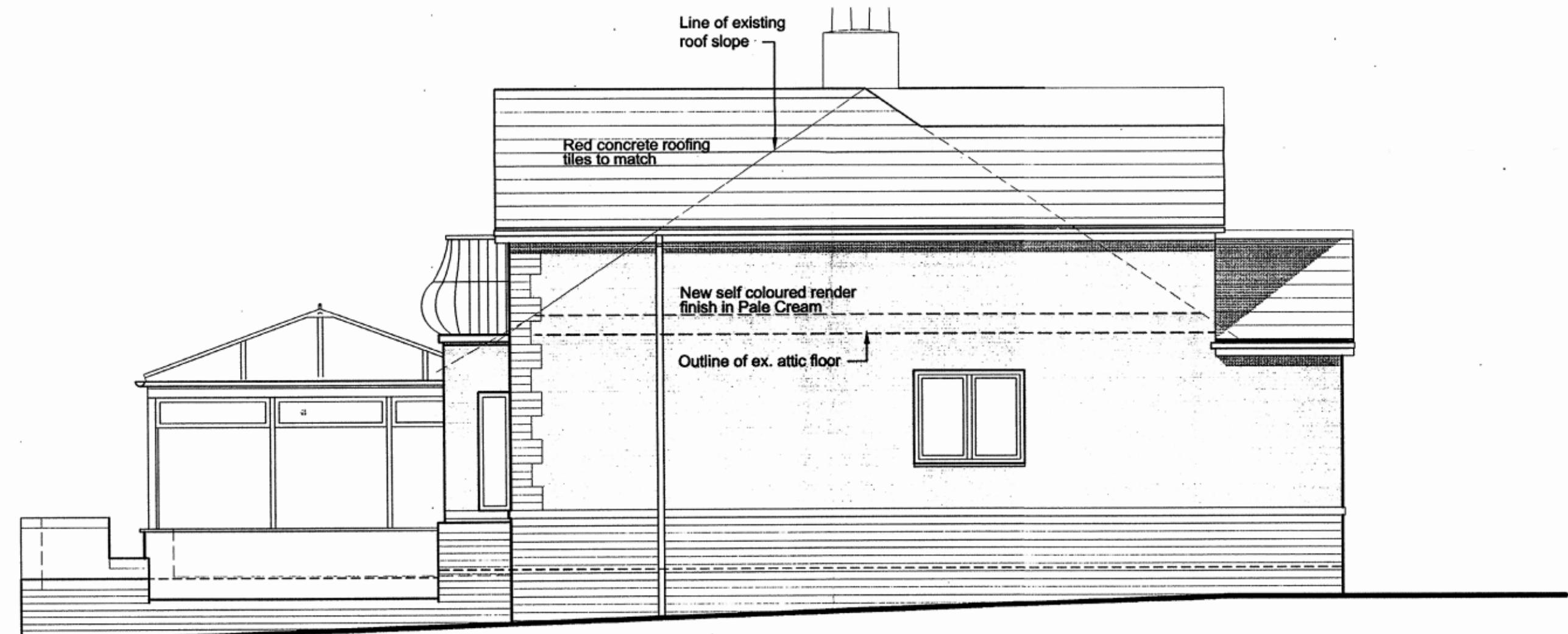
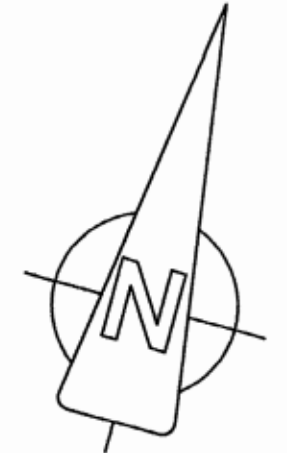
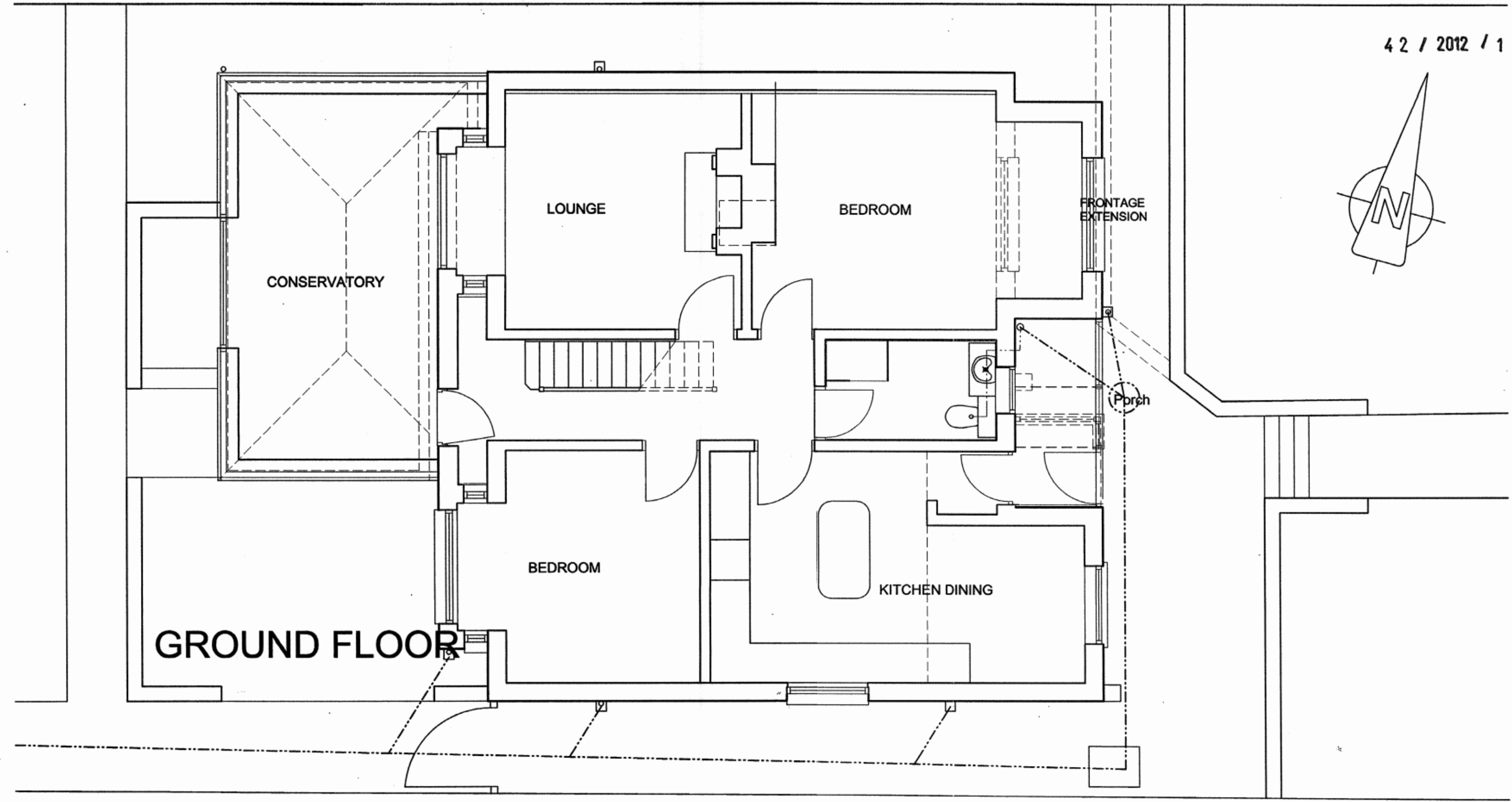


RECEIVED
- 3 AUG 2012
CALEDFRYN RECEPTION

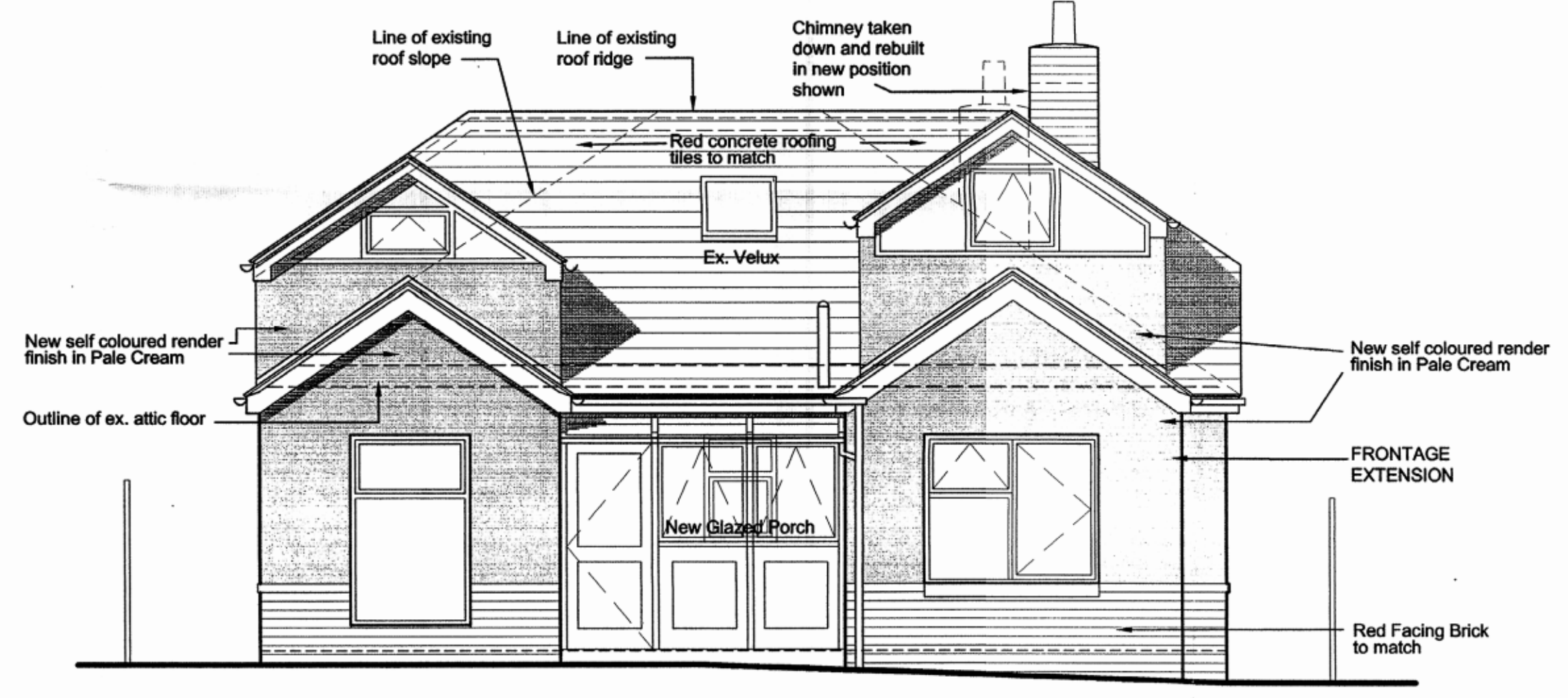
ATTIC FLOOR



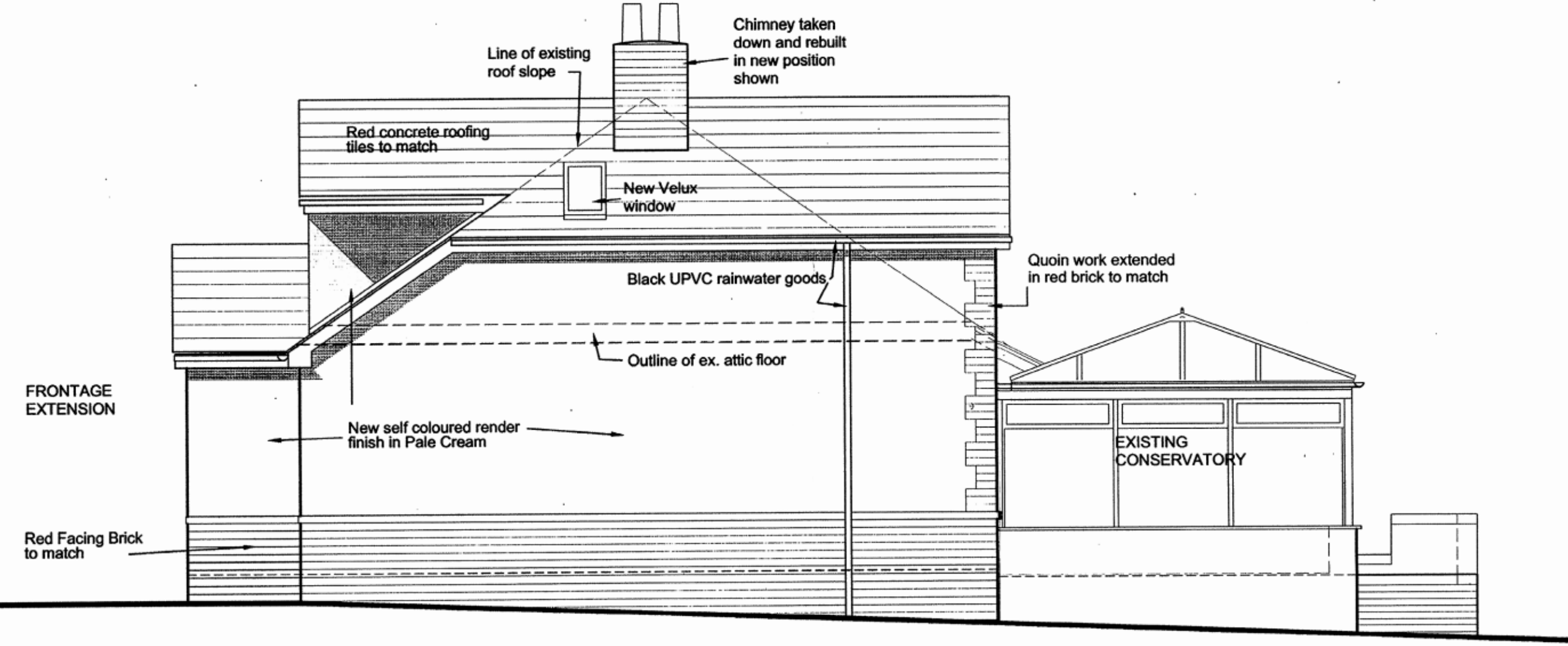
GROUND FLOOR



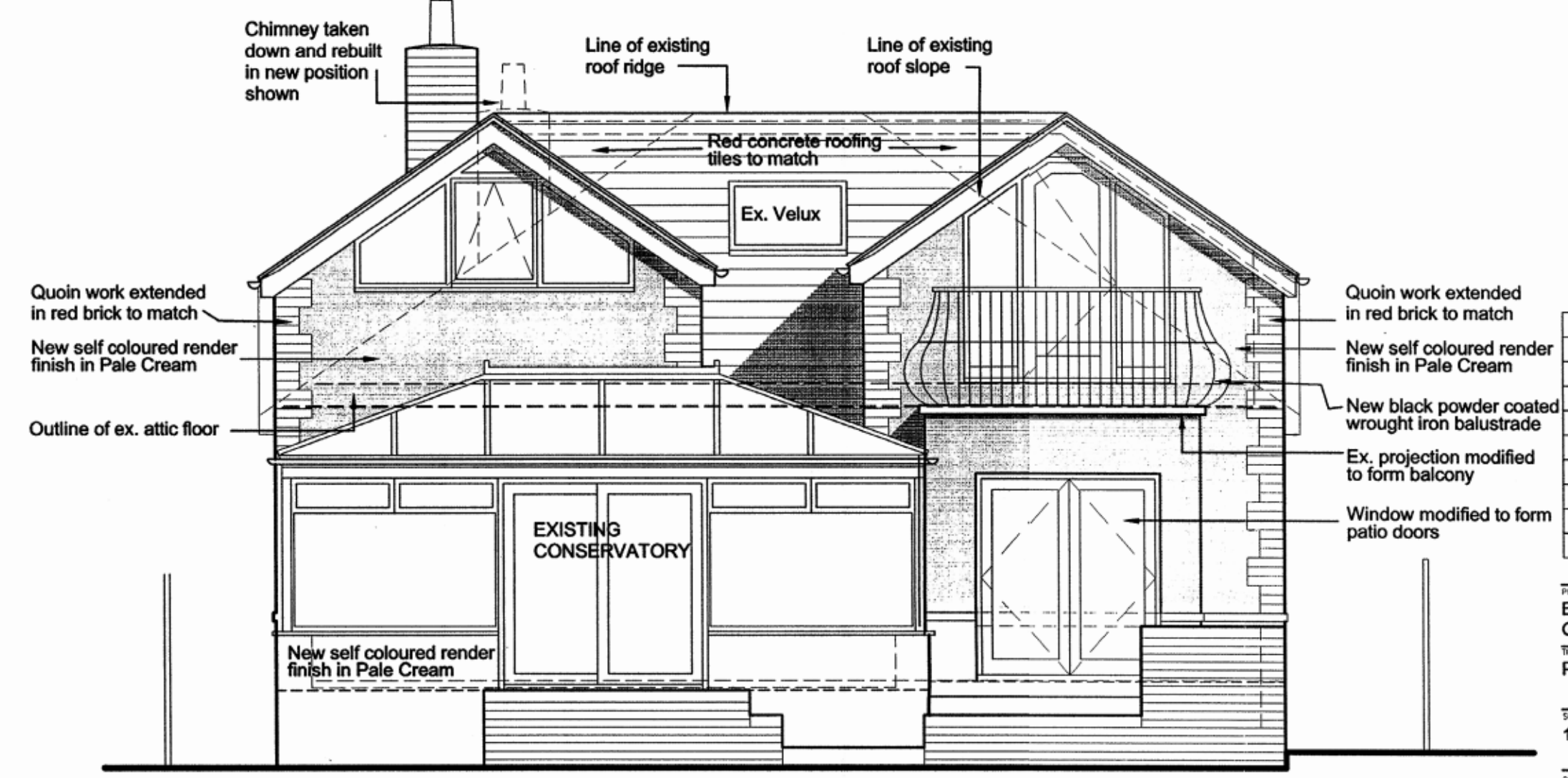
SOUTH (gable) ELEVATION



EAST (front) ELEVATION



NORTH (gable) ELEVATION



WEST (rear) ELEVATION

- MATERIALS.**
- ROOF:** Red concrete roof tiles to match existing.
 - FASCIAS:** White UPVC
 - RAINWATER GOODS Etc.:** Black UPVC
 - WALLS:** Ex. render overlaid with new polymer render system in pale cream
 - WALLS:** New brickwork to frontage and quoins to be in red rustic facings to match.
 - WINDOWS:** All windows and external doors to be finished in woodgrain UPVC.

Rev	Date	Revision Note	By	Check

PROJECT: EXTENSION AND ROOF ALTERATIONS TO GWYNFRYN, ELWY AVENUE, DYSEARTH

PROPOSED ALTERATIONS 1208-PL-02

SCALE: 1:50 DATE: 07-12 DRAWN BY: FB CHECKED BY:

BOYCE ASSOCIATES
CHARTERED ARCHITECTS
Governor House, Governor Street
Madd, Fife, KY11 1JL
Tel: 01352 700088 Fax: 01352 700044
email: info@boyce-associates.com
www.boyce-associates.com

Copyright: All rights reserved. This drawing must not be reproduced without permission. This drawing must not be scaled. Dimensions are in millimetres unless otherwise specified. All discrepancies must be reported to the architect as soon as possible.