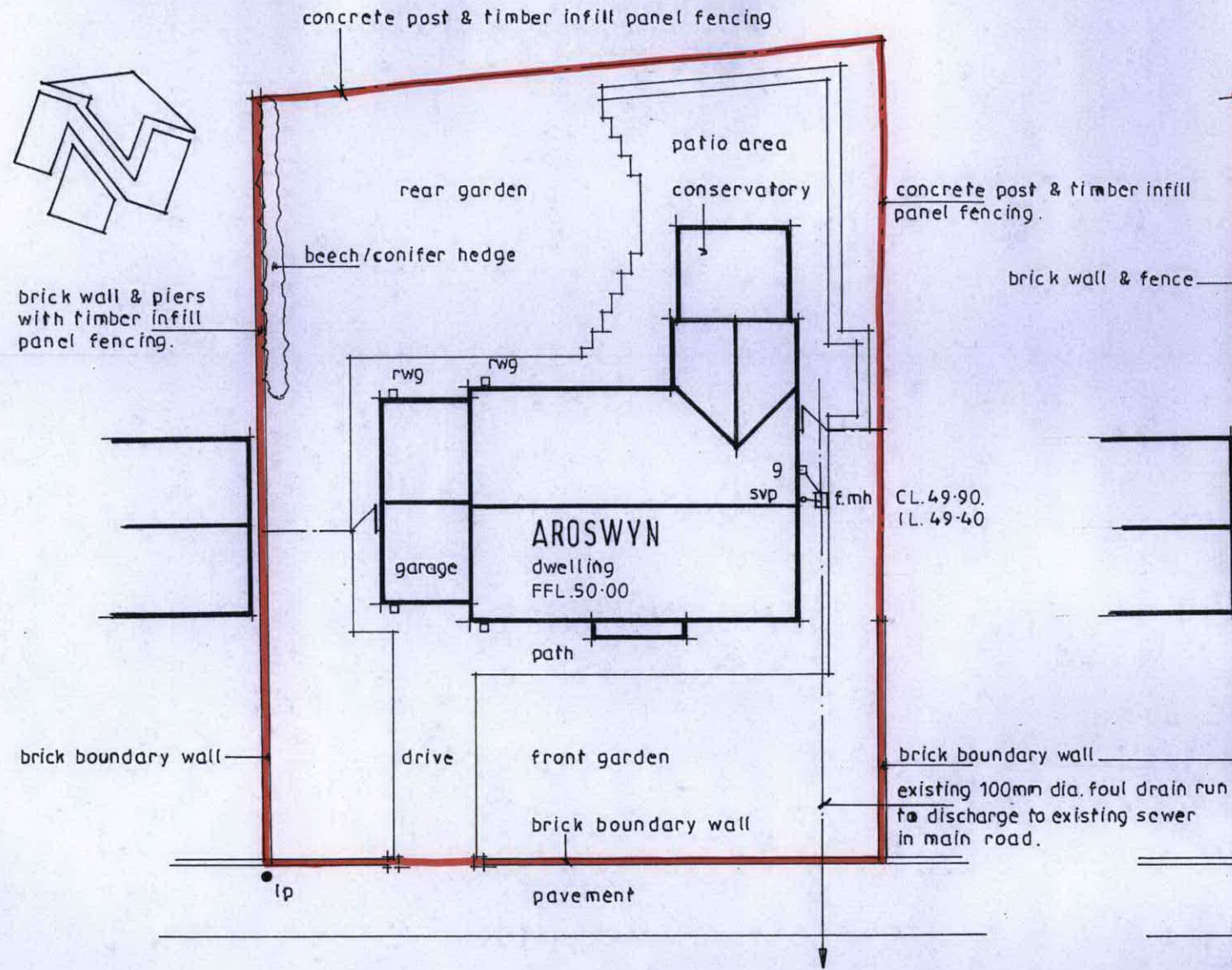
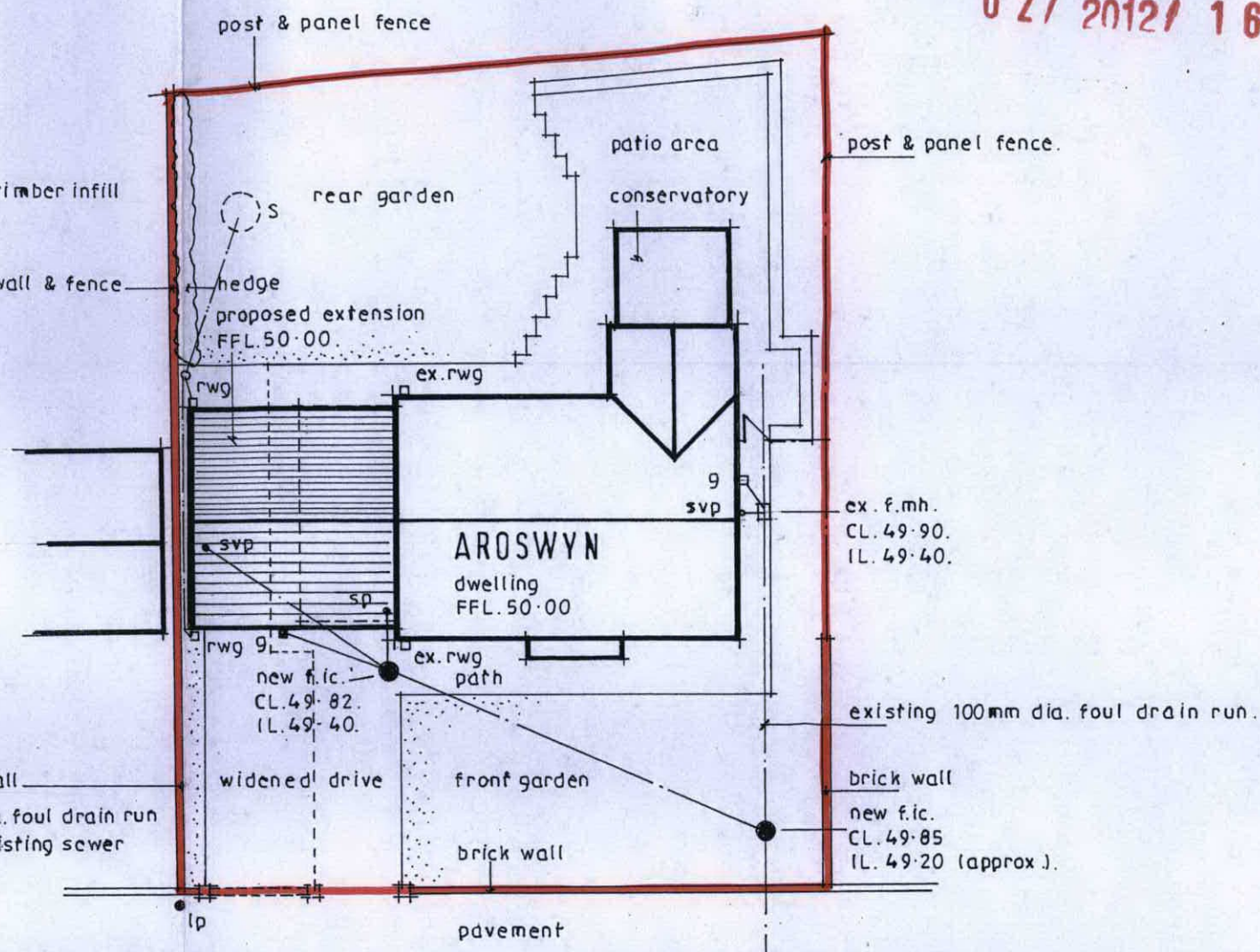


02/2012/1612/PF



CASTLE PARK

EXISTING SITE LAYOUT PLAN
1:200



CASTLE PARK

PROPOSED SITE LAYOUT PLAN
1:200

- GENERAL LANDSCAPING & EXTERNAL WORKS DETAILS.**
- ——— - 100mm dia. foul drainage runs - min. fall 1 in 60.
 - ——— - 100mm dia. surface water drainage runs - min. fall 1 in 60.
 - ⊙ S - Soak-away constructions.
 - [Stippled Box] - Turfed/Seeded Grassed Areas.

RECEIVED
19 DEC 2012
CALEDFRYN RECEPTION

© COPYRIGHT. ALL DIMENSIONS TO BE CHECKED ON SITE PRIOR TO COMMENCEMENT OF WORKS.

M & R MATSCHOK & ROSS
architectural services

project title
AROSWYN, 2 CASTLE PARK, RUTHIN.

drawing title
Existing & Proposed Site Plans.

project no.	drawing no.	revision
0489	1	
date	scale	drawn by
07:12:12	1:200	PM

Birch House, Hen Lon Parcwr, Ruthin, Denbighshire, LL15 1NA
 ☎ 01824 705 222 ☎ 01824 707 171
 ✉ mail@matschokross.co.uk 🌐 www.matschokross.co.uk